

# 2021-2022 Annual Review



# HE KURA TE TANGATA

*People are Precious*

**We “look to the maunga”, we strive for excellence.**

**We recognise and value the cultures of all our peoples.**

**We honour their participation and we seek genuine partnerships.**

**Sharing exceptional skills and insightful knowledge, we seek to support their aims and aspirations for a healthy, prosperous and vibrant future.**

As an Association, we seek to promote, advocate and advance high quality services to the people of Aotearoa through quality evaluation to shape better futures in Aotearoa New Zealand. We see building evaluation capability and influence to further strengthen and share the insightful knowledge that exists within the people, whānau, families, communities and environment of Aotearoa as a critical way to inform and evaluate programmes, services, policy, strategies and other functions delivered or provided by public, private and non-government sectors.

Our tohu and whakatauki, both integral to the identity of ANZEA, reflect our purpose and core values.

## CONTENTS

- Our Vision
- What we do
- Letter from the co-convenors
- Key areas of focus
- Board Representatives
- Membership snapshot
- Regional Branches
- Evaluation Matters
- Our Management Team
- Treasurer's report
- Statement of Financial Performance
- ANZEA 2022 Conference
- ANZEA Board 2022-2025
- Contact us

## OUR VISION

---

Promote, advocate and advance high-quality evaluation to shape better futures in Aotearoa New Zealand

## WHAT WE DO

---

We serve and represent the unique needs, values, obligations and context of the Aotearoa New Zealand evaluation community.

ANZEA was established to represent the need for evaluation practitioners of all kinds, to support their professional development and to promote safe and high quality evaluation services to New Zealand communities.

We want to make the most of our bi-cultural contexts and multi-cultural society. We will promote the integration of theory and practice in evaluation, specific to the needs of Aotearoa and will stimulate debate and research on evaluation practice and its role here. We also seek to enhance evaluation capacity within local, Māori, Pacific and global evaluation communities.

# A LETTER FROM OUR CO-CONVENORS



**Adrian Field**  
Co-convenor



**Seini Jensen**  
Co-convenor

**KIA ORA KOUTOU, TALOFA LAVA, MALO E LELEI, KIA ORANA, FAKALOFA LAHI ATU, TALOHA NI, HALO OLAKETA, IA ORANA, MAURI**

Over the past 12 months, COVID has continued to cast a shadow over Aotearoa and the wider world, as we shift from lockdowns to finding ways of safely navigating a world where risk is more ever-present.

The 2021-22 year, as the mid-year between our two-yearly conferences, was one of consolidation and managing our affairs in a responsible way to ensure we were well-positioned for our forthcoming conference in October. Financially, ANZEA has held a stable position over the past year as we gear up towards a busy year ahead.

As we write, our conference committee is heavily engaged in preparations for the October conference. Under the theme of 'Ka mua, Ka muri: Looking back to move forward,' we will reflect on where evaluation sits now in the context of where we have travelled over the past 17 years. It's exciting that this will be our first kanohi ki te kanohi national event since July 2018, something which all of us are looking forward to, whilst still mindful of keeping us all safe.

Our membership continues to grow, and now exceeds 600 members – in likelihood making us the largest evaluation professional association per head of population in the world – we challenge other nations to disprove us!

The year ahead will be one of further change, and we hope, growth and development within ANZEA. We would like to welcome the new Board who are taking the reins from July this year, and extend our thanks for stepping forward.

We will be farewelling our Chief Editor of our own journal Evaluation Matters — He Take Tō Te Aromatawai, who will be stepping down following the publication of the next issue. We will be taking the opportunity at conference to thank Fiona for some seven years of dedication in her role, and the new board will be leading a process of inviting a new editor.



We sadly farewelled our manager of three years, Tess Laurenson, and also welcomed our Engagement Manager, Nichola Lorenzon. Our Treasurer, Anne Bateman, stepped away from the Board and into the role of Interim Executive Director. Anne will build our organisational systems, structures and revenue streams to create a platform for future growth and impact. With our Finance Manager, Raewyn McLean, our team are building stronger systems and outreach to our members, and a foundation for a regular programme of professional development.

The challenges of professional development within Aotearoa remain. Evaluation services remain in heavy demand, yet the passage into the evaluation profession is at its most vulnerable. This is all the more pressing for the Māori and Pacific evaluation community. On a positive note, we thank Allen & Clarke who are sponsoring a staff member to provide support for a conversation between ANZEA, Community Research, Mā Te Rae, and the Pasifika Fono, to design and advocate for a more sustainable evaluation learning future in Aotearoa.

We would like to take this opportunity to acknowledge the active contribution of our Executive Committee, our Professional Development Committee, and to the wider board and management team for the successes and growth of the past 12 months. We farewell our departing board members and sincerely thank them for their support and service.

We would also like to acknowledge the organisations that supported ANZEA and the ANZEA conference, both financially and in kind throughout the year.

On a personal note, this is our final report to ANZEA members as we approach the end of our time on the ANZEA Board. We would like to extend our grateful thanks to all who have contributed to ANZEA in so many ways over the past three years, through conferences, professional development, management, governance and simply through the aroha, mahi and tangata that are part of the richness of the ANZEA whānau.

EHARA TĀKU TOA I TE TOA TAKITAHĪ, ENGARI HE TOA TAKITINI.  
MY STRENGTH IS NOT AS AN INDIVIDUAL, BUT AS A COLLECTIVE.

Nō reirā, tēnā koutou katoa – Malo lahi 'aupito

*Adrian Field & Scini Jensen*

ANZEA Co-Convenors

## **BUILDING EVALUATION QUALITY & PRACTICE**

To support the needs and aspirations of the evaluation community and improve evaluation thinking and practice.

## **STRENGTHENED RELATIONSHIPS & COMMUNITY**

To grow understanding of evaluation, build the evaluation community and contribute to the creation of ethical, safe and competent evaluative and commissioning environments.

## **FLOURISHING ANZEA ORGANISATION**

To be a strong, professional, viable, sustainable and connected association.

# OUR BOARD



**Adrian Field**  
Co-convenor



**Seini Jensen**  
Co-convenor



**Sarah Appleton-Dyer**  
Deputy Convenor



**Anne Bateman**  
Treasurer



**Steve Tracey**  
Secretary



**Kathleen Seataoai Samu  
(Ata)**



**Jane Godfrey**



**Rae Torrie**



**Kara Scally-Irvine**



**Karen Bissell**



**Aneta Cram**



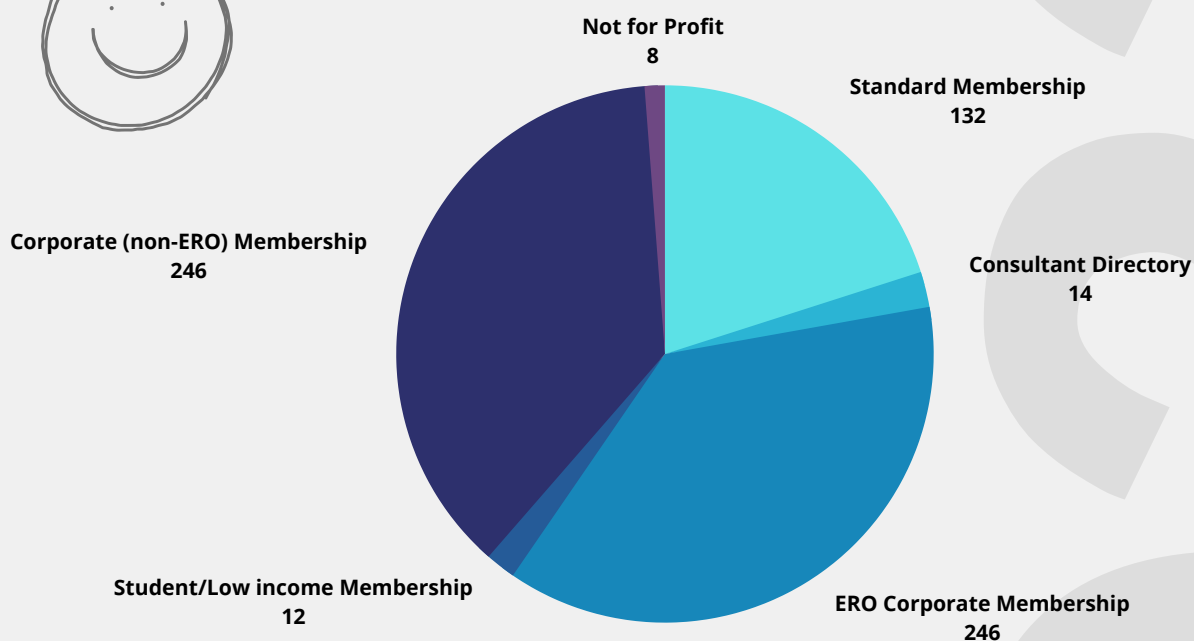
**Robyn Bailey**





# MEMBERSHIP SNAPSHOT

## 658 Active Members



## NEW ANZEA WEBSITE

### ANZEA has a new website and membership platform!

This financial year saw ANZEA transition to Gecco for its website hosting and membership hub.

Gecco offers improved functionality of our overall website, increased engagement opportunities and ease of navigation for existing and potential ANZEA members.

How Gecco will significantly improve our member interactions:

- Providing a member hub, a one-stop-shop where members will have their own profile pages, the ability to register for PD and member events, join ANZEA special interest groups, and be a part of online discussions.
- Streamlining the subscription process so that members have more access to their records and admin spends less time chasing down broken connections and faulty integrations.

The benefits for ANZEA:

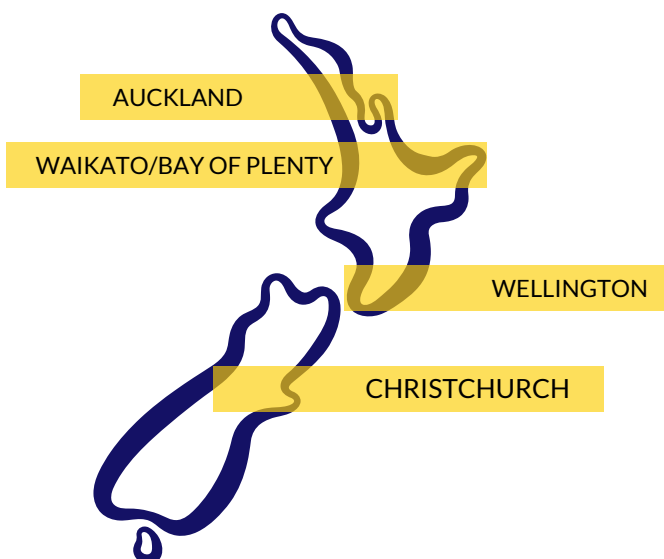
- Reporting/analytics on membership and event participation
- Integrated CRM (Customer Relationship Management)
- Streamlined payments
- An improved Consultant's Directory (still in progress) with search function capability to help members and potential clients locate appropriate consultants.



## OUR BRANCHES

ANZEA has four branches across New Zealand, which organise and coordinate events for members in their region.

### ANZEA BRANCHES



## COVID Impacts

Due to the wider impacts of Covid-19, there was limited activity across all regional branches in FY 2021-2022.

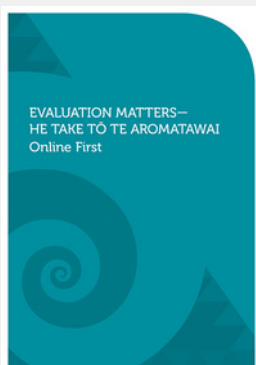
Activity has been significantly impacted by COVID-19 public health measures which have affected not only the feasibility for in-person events but also the capacity of committee members to plan and provide a programme.

## Wellington Branch

In August the branch hosted an in person event Blurring research and policy boundaries in a world focused on 'impact' and 'implications' by John Wren. In 2022 there have been no in person events.

Wellington evaluators and the chair of the Wellington Committee have been busy with organisation of the 2022 national conference and this will be a focus up to October 2022. And the Wellington Committee will support the conference with some lead up work to the conference and hands on support as the conference draws near.

# EVALUATION MATTERS



Evaluation Matters—He Take To Te Aromatawai is an online, international, interdisciplinary journal published annually by the New Zealand Council for Educational Research (NZCER), in conjunction with the Aotearoa New Zealand Evaluation Association (ANZEA).

It is available to read online at: [www.nzcer.org.nz/nzcerpress/evaluation-matters](http://www.nzcer.org.nz/nzcerpress/evaluation-matters)

## Thank you to Fiona Cram...

We will be farewelling Fiona Cram, our Chief Editor of Evaluation Matters — He Take Tō Te Aromatawai, who will be stepping down following the publication of the next 2022 volume of the journal. We will be taking the opportunity at the ANZEA 2022 conference in October to thank Fiona for some seven years of dedication in her role.

## OUR MANAGEMENT TEAM



**Anne Bateman, MSW, MPA**  
Interim Executive Director



**Raewyn McLean**  
Finance Manager



**Nichola Lorenzon**  
Member Engagement Manager

## Farewell...



**Tess Laurenson**  
ANZEA Manager

This past year has seen a few changes in the management team for ANZEA. In March 2022, Anne moved from Board Treasurer to Interim Executive Director to support our growing and changing organisation.

Tess is well known to many members and has been central to the transformation of how ANZEA has worked as an organisation, and has recently left ANZEA. We will miss Tess greatly, and wish her the best in her future endeavours.

We are excited to welcome Nichola, who has recently joined the team as Member Engagement Manager, supporting member engagement through communications and other support.

# TREASURER'S REPORT



Anne Bateman, MSW, MPA

**Board Treasurer  
2019-2022**

ANZEA continues to grow and develop financially as an organisation in order to best serve its' members, and financial activity is aligned with our strategic goals.

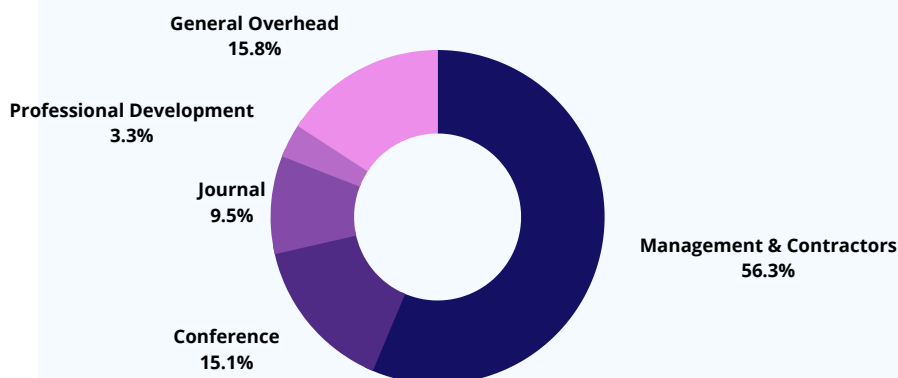
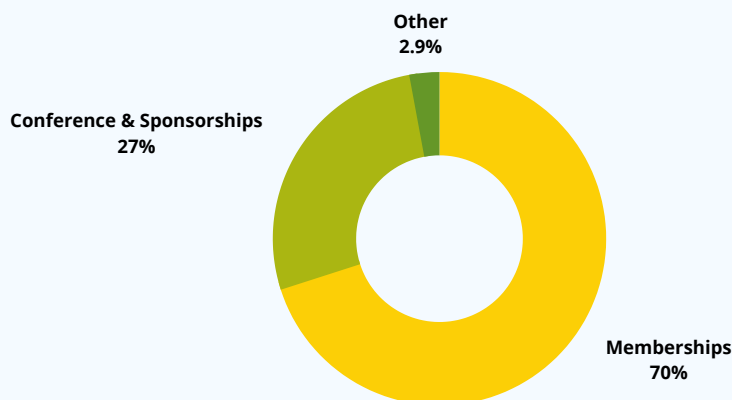
We have had a financially successful year, gauged by being able to support our membership activity and a successful virtual conference in 2021. The conference bridged the prior financial year, so a partial financial picture is presented in the 2021-22 report.

A significant investment for ANZEA was the development of our new website online membership portal to improve member experience and engagement as well as supporting improvement of member services through improved online information and interactions. This investment was an investment in the future of ANZEA, and now provides a single location for member activity (such as personal profiles, access to information and event registration) and reduced the need for third party vendors.

Planned investment in the next year includes professional development and strengthening ANZEAs organisational structure. This investment will support business continuity through the board changeover as well as strengthening the responsiveness to our rapidly increasing membership.

We ensure that our accounts are audited in line with applicable requirements associated with our charitable status.

## OUR REVENUE AREAS



## OUR COST AREAS



# STATEMENT OF FINANCIAL PERFORMANCE

## ANZEA - Aotearoa New Zealand Evaluation Association Annual Report For the Year Ended 31 March 2022

### Principal Activities

The principal activity of the Body is ANZEA is a charitable organisation established to promote, advocate for and advance high quality evaluation that contributes to the improvement and development of appropriate and effective policies, programmes and services for the social, economic and environmental betterment of Aotearoa New Zealand. The nature of the body's principle activity has not changed during the reporting period.

### Financial Performance

	2022 \$	2021 \$
Net (Loss)/Profit of the Body	(1,615)	25,104
Body Funds as at 1st April 2021	104,598	79,494
Movements in Reserves	-	-
Body Funds as at 31 March 2022	<u>102,983</u>	<u>104,598</u>

### Financial Position

The Officers are of the opinion that the state of affairs of the Body are satisfactory

The state of the Body's affairs as at 31st March 2022 was:

Assets of the Body	106,792	124,009
Liabilities of the Body	3,809	19,411

### Financed by Body Capital and Income

<u>102,983</u>	<u>104,598</u>
----------------	----------------

### Auditors

No audit expenditure was incurred as no auditor was appointed, nor was any audit work undertaken for the period under review. We propose that no auditor be appointed for the ensuing reporting period.

### Officers' Disclosures

There were no notices from Officers or other Committee Members wishing to use Body information received in their capacity which would not have ordinarily been available.

There were no transactions entered into with Officers or other Committee Members of the Body.

No Officer received remuneration during the year, other than in their capacity as professional advisors to the Body.

### Donations

No donations were made by the Body during the reporting period.

Note: Full financial statements have been provided at the Annual General Meeting and are available on request or via the New Zealand Charities Register.

# LOOKING FORWARD

## KA MUA, KA MURI LOOKING BACK TO MOVE FORWARD

ANZEA CONFERENCE 2022

10 - 12 October  
Wellington



Kia whakatōmuri te haere whakamua. I walk backwards into the future with my eyes fixed on my past

This whakataukī speaks to Māori perspectives of time, where the past, the present and the future are viewed as intertwined, and life as a continuous cosmic process (Rameka, L, 2016). The whakataukī has been selected to underpin the 2022 conference, we acknowledge the past - the contributions of those who have come before and whose achievements have shaped our thinking and practices today.

We walk into the future reflecting on where we have come from and how far, what we have achieved and learned, how we have changed, and the challenges in front of us.

The future suggests a world shaped by Covid-19, critical environmental and societal challenges and amplified technological development. We are also experiencing generational change and shifting worldviews as Aotearoa stands at the forefront of indigenous reclamation. We continue to examine the role of evaluation in society, exploring its position as influencers of change.

As major change is upon us, our whakataukī reminds us that the past is central to present and future Aotearoa. We reflect upon the past to provide inspiration and guidance in how we successfully adapt to the future.

This requires a critical lens while maintaining honesty, humility, and a genuine desire to make a difference for the future.

*Register  
Now!*

**We look forward to bringing the ANZEA  
membership together for our first in-person  
event in some time!**

**Registration is available at [ANZEA.org.nz](https://ANZEA.org.nz)**

# LOOKING FORWARD

## INCOMING BOARD



Robyn Bailey



Karen Bissell



Aneta Cram



Emma Fergusson



Sulieti Filimoehala



Tony O'Connor



Natalie Piesse



Sankar Ramasamy



Kara Scally-Irvine



Natalie Slade



Sarah Talboys

ANZEA  
BOARD  
2022-2025

## CONTACT US

[www.anzea.org.nz](http://www.anzea.org.nz)

We'd love to hear from you. Drop us a line at [contact@anzea.org.nz](mailto:contact@anzea.org.nz)

Charity registration number: CC27762