

Agenda:

12.30- 12.35: Opening karakia

12:35-12.45: Introduction of Natalie and John

12.45-12.55: Introduce conference programme and kaupapa

12.55-1.10: Key dates, call for proposals, tips and trick around submitting

1.10-1.25: Open floor for questions and discussion

1.25-1.30: Closing karakia.

KA MUA, KA MURI **LOOKING BACK TO MOVE FORWARD**

ANZEA CONFERENCE 2022

10 - 12 October
Wellington



Kia whakatōmuri te haere whakamua. I walk backwards into the future with my eyes fixed on my past

Karakia Ngā Tauwhirotanga

Ngā manaakitanga a te wāhi
ngaro ki runga ki tēnā ki tēnā
o tātou
kia puāwai te tika, te pono, te
aroha
me ngā tauwhirotanga katoa
tihei mauri ora!

May we receive the care and guidance of
our loved ones
may righteousness, honesty and love
blossom may we have compassion for
one another
seize the day!





ANZEA 2022 CONFERENCE

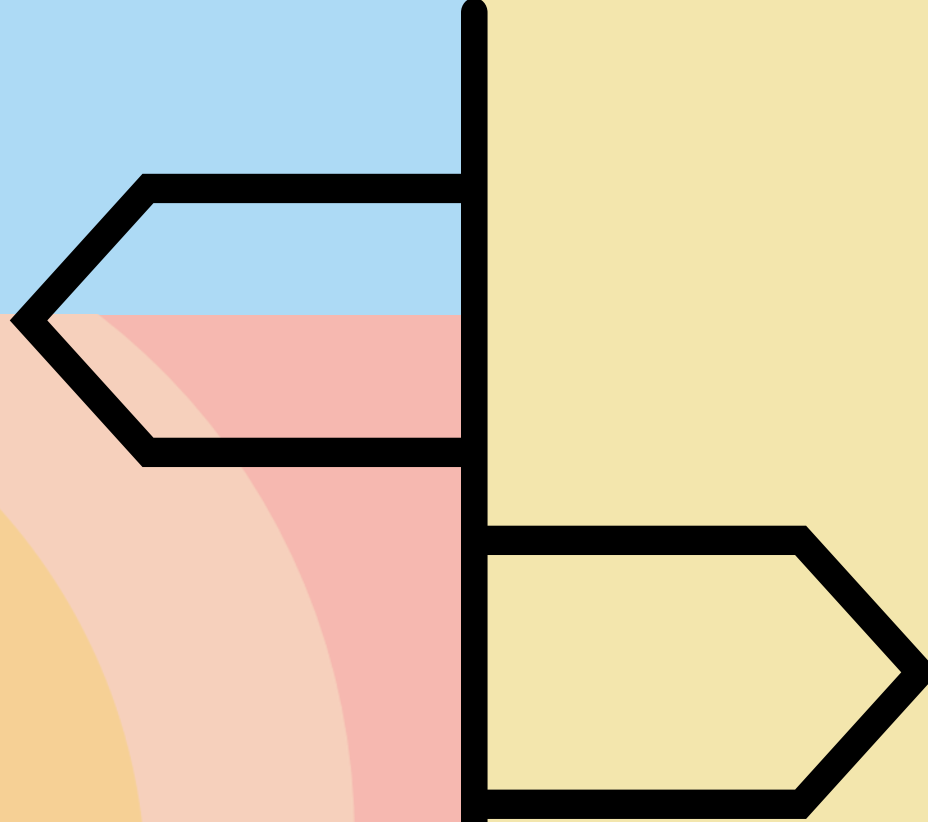
KA MUA, KA MURI:
LOOKING BACK IN
ORDER TO MOVE
FORWARD

Our aim for those who attend:

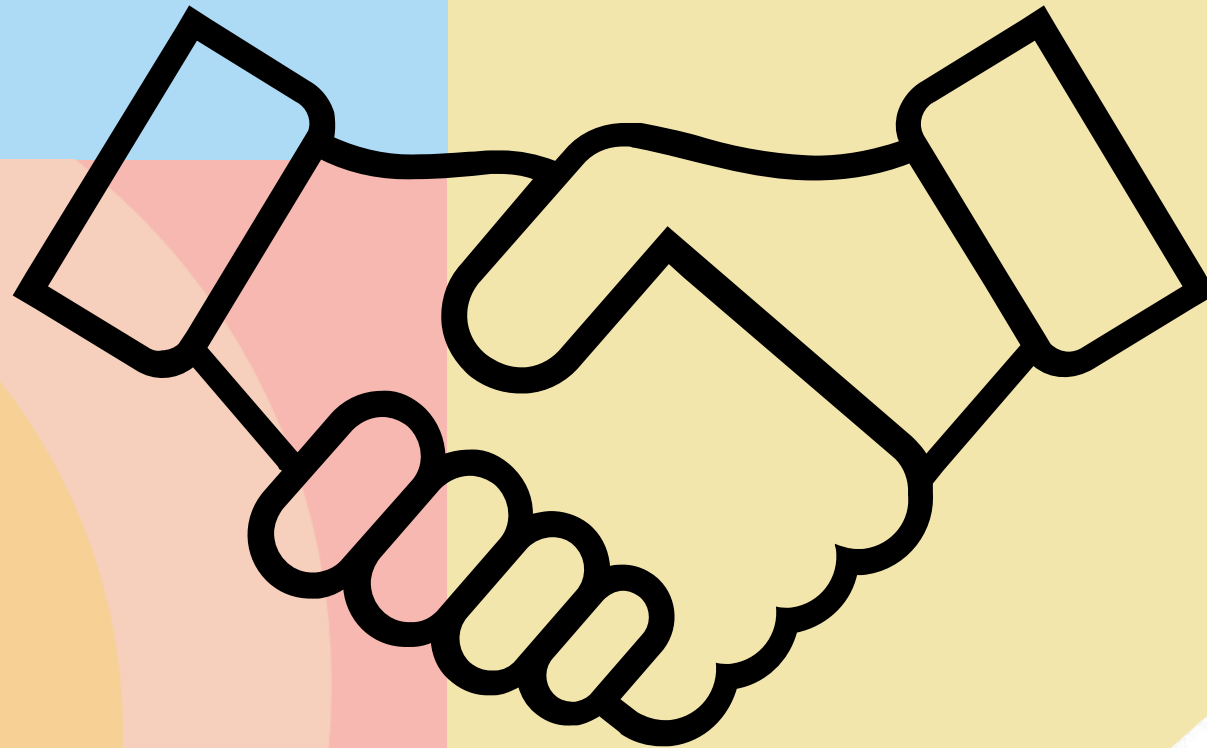
- Be reflective
- Be challenged
- Have eyes-opened
- Engage with peers, across disciplines and cultures
- Heightened awareness, engagement and acknowledgement of Māori and Pacific evaluation perspectives and practice
- Be armed with practical tools- 'the doing' of evaluation
- Be inspired to support meaningful change.

Looking back

Looking forward



OUR COMMITMENT TO TE TIRITI O WAITANGI



CONFERENCE » Aotearoa New Zealand Evaluation Association (anzea.org.nz)

FINAL-ANZEA-Conference-2022-Streams.pdf

Stream 1	Stream 2	Stream 3	Stream 4
<p>Walking into the future for the profession by acknowledging what our tipuna have passed on to us, and anticipating the challenges facing us.</p> <p><u>The Wero</u></p> <p>Acknowledging our history as a profession in Aotearoa NZ; how we might build upon it and face the challenges in front of us now.</p> <p>Identifying and acknowledging our innovative, unique kete of knowledge and practices as evaluators in Aotearoa NZ and celebrate our contribution to evaluation in the wider world.</p>	<p>Reflecting as a profession on the challenges and opportunities in front of us now and exploring what our unique contribution is to the wider world of evaluation.</p> <p><u>The Wero</u></p> <p>Having honest conversations about the hard things; the doing of our work and the future profession in Aotearoa NZ.</p> <p>Acknowledging and respecting where we have come from, understanding there are often no simple answers, and some things go in cycles but are never quite the same across generations.</p>	<p>Celebrating our work of today and talking about what we have learnt, and challenges being faced doing evaluative work.</p> <p><u>The Wero</u></p> <p>Showcasing and discussing the work you / your organisation has done, is doing or will shortly commence. What are the challenges faced, innovative approaches, the solutions?</p> <p>What have you learnt about topics, what influence your work has had, or what challenges have you faced in communicating insights to key decision-makers?</p>	<p>Developing and sharing your knowledge and skills as evaluators with others</p> <p><u>The Wero</u></p> <p>Sharing your experience with your colleagues. Do you have some practical examples that you can share that provide learning opportunities for them to practice doing evaluation work, or learn tips and tricks of the trade?</p> <p>What would you like to have known when you started your journey, or what are the questions you would like answered from others in the profession?</p>
<ul style="list-style-type: none"> What does Ti Tiriti, de-colonisation and indigenous reclamation as a social movement mean for theory and practice of evaluation in Aotearoa NZ? How can evaluation in Aotearoa NZ honour Te Tiriti partnerships? A generational change in leadership and professional experience is taking place across the board: <ol style="list-style-type: none"> what should it look like? what does it mean for what we do and who we are as a profession? are we really prepared? What are the entryways into evaluation and how do we strengthen these? <ol style="list-style-type: none"> where are the new generation of evaluators going to come from? what are the skill-sets and knowledge bases that may be necessary? what needs to be retained? what needs to change? how is it going to happen? how do we deliver training and recognise evaluation skills and knowledge? The language of evaluation is changing (or is it really, and what does it mean?) What do we need to be doing now for the next 10 years, and how might we get there? How has, and in what way is, the profession evolving? What can Aotearoa NZ offer the world of evaluation? 	<ul style="list-style-type: none"> The development of a unique Aotearoa NZ kete of methods and what this look like, where more is needed? What theoretical frameworks guide practice? Have the evaluation boundaries of independent assessors of value and merit blurred in our quest to be relevant in policy and operational decision-makers? Do evaluators still have a role as agents of social change or is this a blurring disciplinary rigour – and was always going to be a challenge? What is the role of evaluation in combatting misinformation? What would you like the next generation of evaluators to know? How strong are our connections to other research disciplines, what can we learn from them and does it matter? Have evaluation methods really evolved that far or are they just marketing exercises for academics? Do we really understand the communities we seek to serve and how can we know them better? 	<ul style="list-style-type: none"> What are the new emerging evaluation methods and ethical issues we are facing? What kind of methods and practices align best with our communities? Topics/programmes being evaluated Skills-sets and knowledge bases being drawn upon Cross-agency work Cross-cultural work The challenges faced and overcome Innovative things being tried How do we ensure evaluation has real impacts for our communities? What have we learnt during Covid-19 and how we have done our work during a pandemic? What have we learnt, would like to share, and discuss with our peers? 	<p>We invite expressions of interest for delivery of learning opportunities for evaluators (at different levels) to learn about the practice of evaluation from their peers.</p> <p>This may be through a mix of in-conference or pre or post conference workshops / extended sessions.</p> <p>Areas of interest are (but not exclusive to):</p> <ul style="list-style-type: none"> Back to the basics: what are the essential components of evaluation in Aotearoa NZ and how is it done well? The practice of evaluation in a range of settings: <ol style="list-style-type: none"> Kaupapa Māori methods Pasifika methods Mixed methods Qualitative/quantitative methods Community-led evaluation Cross-agency evaluation. <p>or topic areas, such as:</p> <ol style="list-style-type: none"> Commissioning evaluations and contract management Effective responses to RFPs Effective logic model and rubric design Conducting robust value judgements. Subject matter expertise on topics, such as (but not exclusive to): <ol style="list-style-type: none"> Drug and alcohol Hard to reach groups Vulnerable communities Education/International education.

Key dates

Applications for presenting open for submitting	Open https://anzea.org.nz/conference/anzea-conference-2022/conference-proposals/
Tickets on sale	01 June 2022
Submissions for presenting closes	15 June 2022
Successful presenting submissions confirmed	Late July 2022
Conference programme announced	Late July 2022
Pre-conference workshops	10 October 2022 (morning)
Conference	10-12 October 2022
Post-conference workshops	13 October 2022

Types of presentation options

- 5-minute Ignite session (20 slides/15 seconds)
- 20 minute presentation
- 45 or 90 minute workshops (*comprising wānanga, talanoa, roundtable, facilitated discussion, training/skills development opportunities*)
- Any other creative or innovative-type session

You may offer more than one contribution, in which case please complete a new form for each contribution

Making your Abstract Stand out

Topics covered in the next few slides

What is an abstract?

- You are making a sales pitch

Know your audience

- Research the conference

Plan and write your abstract

- Do the prep
- What is it you are wanting to do and how will it contribute to the conference

Tips and Tricks: Do's and don'ts

What is an abstract?

- An abstract is a brief summary of the paper you want to present at an academic or professional / practitioners conference, but actually it's much more than that.
- You are selling your ideas, first to the conference organisers, and then to the conference delegates.
- You need to make your abstract as **fascinating** and **enticing** as possible.
- The abstract, does not only say something about the paper you are proposing, but also a lot about yourself.

Do's

1. Do your research on the Conference theme and programme structure

2. Make your abstract fascinating, enticing, and different

- ✓ make the title work

- grab people's attention. Most importantly, it needs to state your topic clearly and develop interest

- ✓ be clear about what the specific topic is you are presenting on

- explain your work or topic for discussion, give context, method, findings or line of argument, and what you will be doing

- ✓ say what the purpose of the presentation is; how:

- will it contribute to the conference theme and streams, the audience benefit from attending

Do's

3. Write the abstract out in MS Word first then copy into the online form

- ✓ this allows to you monitor your word count, move things around, check your spelling etc.

4. Be clear and concise – make every word and character matter

- ✓ Remain focused and establish your ideas
- ✓ Avoid fillers and jargon
- ✓ Edit with a clear head
- ✓ Write your abstract well, using plain English wherever possible

Do's

5. Answer all the form questions

- ✓ This gives you more room to outline your proposal and its benefits to the organisers and attendees
- ✓ Helps the selectors to think about where the proposal might fit within the overall programme

Don'ts

1. Take selection for granted – slots are limited
2. Poor quality abstracts will not be accepted. Poor quality means
 - not clear what the question / topic is that is being talked about, not aligned with the conference streams,
 - it is not easy to understand, it is confusing, lacks a structure, clear line of argument or presentation flow
 - it is boring – make it attractive, what will participants learn, get out of coming to hear your presentation
 - indicates poor methods or understanding about the argument and context
3. Assume everybody will have your knowledge of evaluation terms, concepts, or specific methodologies
4. Leave it too late to prepare your abstract or submit a half-completed form
 - as it will significantly limit the chances of selection compared to other proposals.



ANZEA Conference 2022 Proposals

Ka mua, ka muri: Looking back in order to move forward

10 - 12 October 2022, Te Papa,

Wellington

Conference Proposal Submission Form

Thank you for your interest in submitting a proposed contribution for inclusion in the ANZEA Conference 2022 Programme.

The organisers are aiming to showcase the broad kete of evaluation knowledge, practice and issues in Aotearoa NZ in the conference programme. To facilitate this we invite a range of contributions proposals for consideration by the committee.

Contributions may take the form of 20 minute oral presentations, panel sessions, workshops (comprising wānanga, talanoa, roundtable, facilitated discussion, training / skills development opportunities) to present an insight, story, illustrate a method, or present a conversation reflective of Aotearoa NZ evaluation activities.

All proposals must align with the [conference theme](#), whakataukī, and at least one of the [four conference streams and associated wero](#).

The questions associated with each of the streams are guides and intended to invite challenging conversations. Conversations must honour the whakataukī and be undertaken in a mana enhancing manner.

This form will assist the committee with their decision-making about contributions for inclusion in the conference programme. All parts of the form must be completed.

You may offer more than one contribution, in which case please complete a new form for each contribution.

All proposals must be submitted by 15 June 2022.

Incomplete forms will not be considered for review.

Contribution leaders will be informed about their proposal by late July 2022.

Please note all contributors accepted into the programme will have to pay a full registration fee for conference.



ANZEA Conference 2022 Proposals
**Ka mua, ka muri: Looking back in
order to move forward**
*10 - 12 October 2022, Te Papa,
Wellington*

Tips for completing the form:

Familiarise yourself thoroughly with the [conference programme](#) structure first, think about how your proposal will help the conference organisers deliver on the intent and topic areas for the conference, and where your contribution would best fit within the programme.

Draft your responses to the questions in this form in your preferred word processing app first. This will allow you to check the number of characters used and to do some formatting. The text can then be copied and pasted from your document directly into this form.



ANZEA Conference 2022 Proposals
**Ka mua, ka muri: Looking back in
order to move forward**
*10 - 12 October 2022, Te Papa,
Wellington*

Contributor contact details

Please submit your proposal to contribute to the ANZEA conference 2022 below.

If you have any questions or issues please contact
conference@anzea.org.nz

*** 1. Lead contributor contact details**

Name	<input type="text"/>
Organisation	<input type="text"/>
Address	<input type="text"/>
Address 2	<input type="text"/>
City/Town	<input type="text"/>
Region	<input type="text"/>
Postal Code	<input type="text"/>
Country	<input type="text"/>
Email Address	<input type="text"/>
Mobile Phone Number	<input type="text"/>

*** 2. Confirming the main contact person**

- ☐ Yes, the lead contributor will be treated as the main contact person for your submission
- ☐ I would like someone else to be the main contact person. Please include their contact details in the comments box below

Other main contact person

3. Additional contributors (if applicable)

please enter names and email address for each contributor



ANZEA Conference 2022 Proposals
**Ka mua, ka muri: Looking back in
order to move forward**
*10 - 12 October 2022, Te Papa,
Wellington*

Contribution proposal
Details of contribution

*** 4. Title of contribution**

*** 5. Contribution outline/abstract (max 300 words)**

Please outline your proposal (this is the equivalent to an abstract). You must outline what contribution will cover. It should be clear, concise, informative and set out what your contribution will cover.

*** 6. Proposal type**

- ☐ Workshop, wānanga, talanoa, roundtable/facilitated discussion around a topic or question(s). (45 minutes)
- ☐ Workshop, wānanga, talanoa, extended presentations roundtable/facilitated discussion around a topic or question(s). (90 minutes)
- ☐ Presentation (20 mins)
- ☐ Ignite presentation (20 slides/15 seconds) see here for more info!
<http://www.ignitetalks.io> (5 minutes)
- ☐ Other creative and innovative sessions (please specify)

*** 7. Conference Stream**

Please select the conference stream you think best reflects where your contribution aligns.

(Select only one stream. The conference organisers may propose another stream).

- ☐ Stream 1: Walking into the future for the profession by acknowledging what our tipuna have passed on to us, and anticipating the challenges facing us.
- ☐ Stream 2: Reflecting as a profession on the challenges and opportunities in front of us now and exploring what our unique contribution is to the wider world of evaluation.
- ☐ Stream 3: Celebrating our work of today and talking about what we have learnt and challenges being faced doing evaluative work.
- ☐ Stream 4: Developing and sharing your knowledge and skills as evaluators with others.

*** 8. Please provide some brief notes explaining the rationale for the stream and proposal type you've selected.**

Specifically, how are you hoping your proposal (and the format you've selected) will stimulate thinking and/or discussion in relation to the stream(s) you've chosen.

The explanation you provide here will help us to ensure we can develop a conference programme where different presentations and sessions complement each other and effectively answer our whakataukī.

9. Equipment needed

Standard equipment available: Laptop, data projector, whiteboard, flipchart, pens and Blutac

If you require extra equipment please indicate here.



ANZEA Conference 2022 Proposals
**Ka mua, ka muri: Looking back in
order to move forward**

*10 - 12 October 2022, Te Papa,
Wellington*

Thank you for your contribution

Contribution leaders will be informed about their proposal
by late July 2022.

Thank you for your proposed contribution.

You may submit more than one proposal. To do this you need submit a new
proposal using this form.

If you have any questions, please email your question to Stuart Challis at:
conference@anzea.org.nz

Yours

John Wren and Natalie Piesse
Co-convenors ANZEA 2022 Conference Organising Committee

Questions and discussion



Whakairia te tapu

Ka whakairia te tapu

kia wātea ai te ara

kia tūruki whakataha ai

kia tūruki whakataha ai

haumi e, hui e, tāiki e!

Restrictions are moved aside so the
pathway is clear

to return to everyday activities

to return to everyday activities

be bound together firmly as one!

KA MUA, KA MURI **LOOKING BACK TO MOVE FORWARD**

ANZEA CONFERENCE 2022

10 - 12 October
Wellington



Kia whakatōmuri te haere whakamua. I walk backwards into the future with my eyes fixed on my past